

ParktoPark 1/2 marathon Waynesboro → Stuarts Draft

Dear Runners,

On behalf of the Parks & Recreation Departments of the City of Waynesboro and Augusta County thank you for coming out to run with us for the 7th annual Park to Park Half Marathon. We believe you and the other 650 runners will discover that this course continues to be one of the most scenic in the Shenandoah Valley. This packet contains most of the details about the race, from the best spectator spots to the energetic aid stations. Also included are virtual coupons from some of our amazing sponsors. Please tell them thanks for helping make this race a success. If you have other questions concerning the race please feel free to email or call us at:

parksandrec@ci.waynesboro.va.us - 540-942-6735.

Happy running,

Dwayne Jones, Ben Lancaster & Amanda Reeve Scott Martin



Packet Pick Up:

Friday April 24 from **3 PM to 7 PM** at the **Best Western Plus Inn & Conference Center**

Saturday April 25 at Ridgeview Park (the start) beginning at **6:15 AM to 6:45 AM**

Shirts for Sports

With numerous old race shirts taking up space, we will be taking donations at packet pick-up for shirts to go to a good home. We recommend \$2 for each shirt, cash only. All proceeds will go to benefit Therapeutic Adventures.

Directions to Best Western Inn & Conference Center:

I-64 to Exit 94. At the top of the ramp, turn right onto Route 340 and follow to the intersection of Lew Dewitt Blvd. Turn left at the light onto Lew Dewitt Blvd. and continue to the first stop light. Turn left at this light onto Apple Tree Lane. Continue straight ahead and the hotel is located on the right adjacent to Cracker Barrel. Still need help call Best Western @ 540-942-1100

Course Description:

Start at Ridgeview Park near the playground; .2 miles over grass...exit park through gate
Turn LEFT on Lovers Lane...bear RIGHT on Greenway Circle
LEFT on Meadowbrook; RIGHT on Lyndhurst Rd. (**Aid Station #1—Adventist Church**)
Cross over I-64 - LEFT on Lyndhurst Road towards Waynesboro Nurseries
RIGHT on Shalom Road (**Aid Station #2—Port-a-potties**)
LEFT on Hall School Road (**Aid Station #3— Springdale Church**)
LEFT on Lipscomb Road (**Aid Station #4— Waynesboro Nursery—Port-a-potties**)
RIGHT on Lyndhurst Road - RIGHT on China Clay
(**Aid Station #5— White Church -Port-a-potties**)
RIGHT on Patton Farms Road
LEFT on Wayne Avenue (**Aid Station #6—just past big red barn**)
RIGHT on Draft Avenue – LEFT on Edgewood into Guy K Stump Elementary School

Water / Aid Stations:

AID STATION	MILE
1 – 7 TH Day Adventist – Lyndhurst Rd	1.9
2 – Waynesboro Nursery – Shalom Rd (port-a-potties)	3.9
3 – Springdale Church – Hall School Rd	5.7
4 – Waynesboro Nursery – Lipscomb Rd (port-a-potties)	7.9
5 – Beulah Baptist Church – China Clay (port-a-potties)	9.2
6 – Near Red Barn – Wayne Ave	11.2

Gatorade will be at **Aid Stations 2, 4 & 6** and served first in line...then water

GU will be available at Aid Station 5 to push you to the finish!

A special thanks to PEPSI for donating 6000 cups!!!!!!

Directions to Ridgeview Park (Start):

SHOTGUN START at 7:00 AM

From I-64, take Exit 94. When you get off the exit ramp, turn right onto Route 340. Take Route 340 approximately 2 miles. At the traffic light at Riverview Cemetery, turn right on to 13th Street. Go one block to the stop sign and turn right onto Magnolia Avenue. Magnolia ends at the park. The starting line is adjacent to the playground.

Restrooms are available near the pool and at the large amphitheater in the park.

See enclosed map

Drop Bags: *(change of clothes, keys, cell phone etc.)*

We will transport your drop bag to the finish line in Stuarts Draft. DuPont Community Credit Union has donated sling packs to transport your goodies in....just write your bib number on the white box on the sling pack and look for a table at the finish line.

Race Bibs & Timing:

The J&A Racing team are back again this year. We will be using the Chronotrack B-Tag system. Your timing chip will be affixed to your bib. Pin your bib on the front of the shirt you will be crossing the finish line wearing. **Please only cross the finish line ONCE!!!**

Spectator Viewing:

Do you have adoring fans who want to watch you run a PR? See the attached map for the safest and best viewing spots to catch a glimpse of runners. **Meadowbrook, Lyndhurst & Lipscomb Roads will be closed to ALL vehicular traffic. Spectators should use Rte 340 to access spectator viewing stations along the course....see enclosed map**

Spectator spot #1: *(around mile 5.3)* Take 340 S - turn LEFT on 632 (Shalom Rd) park along field

Spectator spot #2: *(around mile 10.6)* Take 340 S—turn LEFT on 635 (Mt. Vernon) park long field at the bottom of the hill

Spectator spot #3: *(mile 13.1)* Take 340 S—LEFT on Edgewood (Stuarts Draft Park)

Family members wishing to meet runners at the finish **MUST enter Stuarts Draft Park at the Edgewood entrance off of 340.**

Shuttle buses:

Augusta County Parks & Recreation and Augusta County Schools will be providing shuttles and buses to transport you back to the start of the race. They will start running back to Ridgeview Park beginning at 9:00 AM and continue until all runners are transported back to the start.

Finish Line Details:

Once you have finished the race...relax in Stuarts Draft Park & enjoy some great food provided by Panera Bread. Local band Little Walter & the Convictions will be kicking some tunes at the finish line as well.....dancing is encouraged if your legs are up for it.



Awards Ceremony:

Will take place around 9:30 am at Stuarts Draft Park. Sit back, make yourself comfortable, enjoy some food and music and listen for your name to be called!

Changing Rooms:

The Stuarts Draft bath house will be available for you to change after the race. We will have cool towels at the finish line to re-energize you.

Need a shower before your ride home?

Again this year.....we are opening the Ridgeview Park pool showers (at the starting line) for folks who want to shower before heading home. This service will be available from 9:00am to 11:30am.

Running with your tunes:

We urge extreme caution in any use of headphones during an open road course. Talking to your fellow runners is great way to pass the time, but ultimately you must consider the safety of yourself and others in deciding to use headphones.

******* RESTROOMS AT THE START *******

We have several places at the start to take care of the pre race jitters. The pool bath house, the small building next to the main parking lot and the amphitheater which is just past the playground.....(see enclosed start line map)

[Check out our other events in 2015](#)

Kids Fun 2 Mud Run: June 20

Summer Extravaganza 5K & 10K Races: July 11

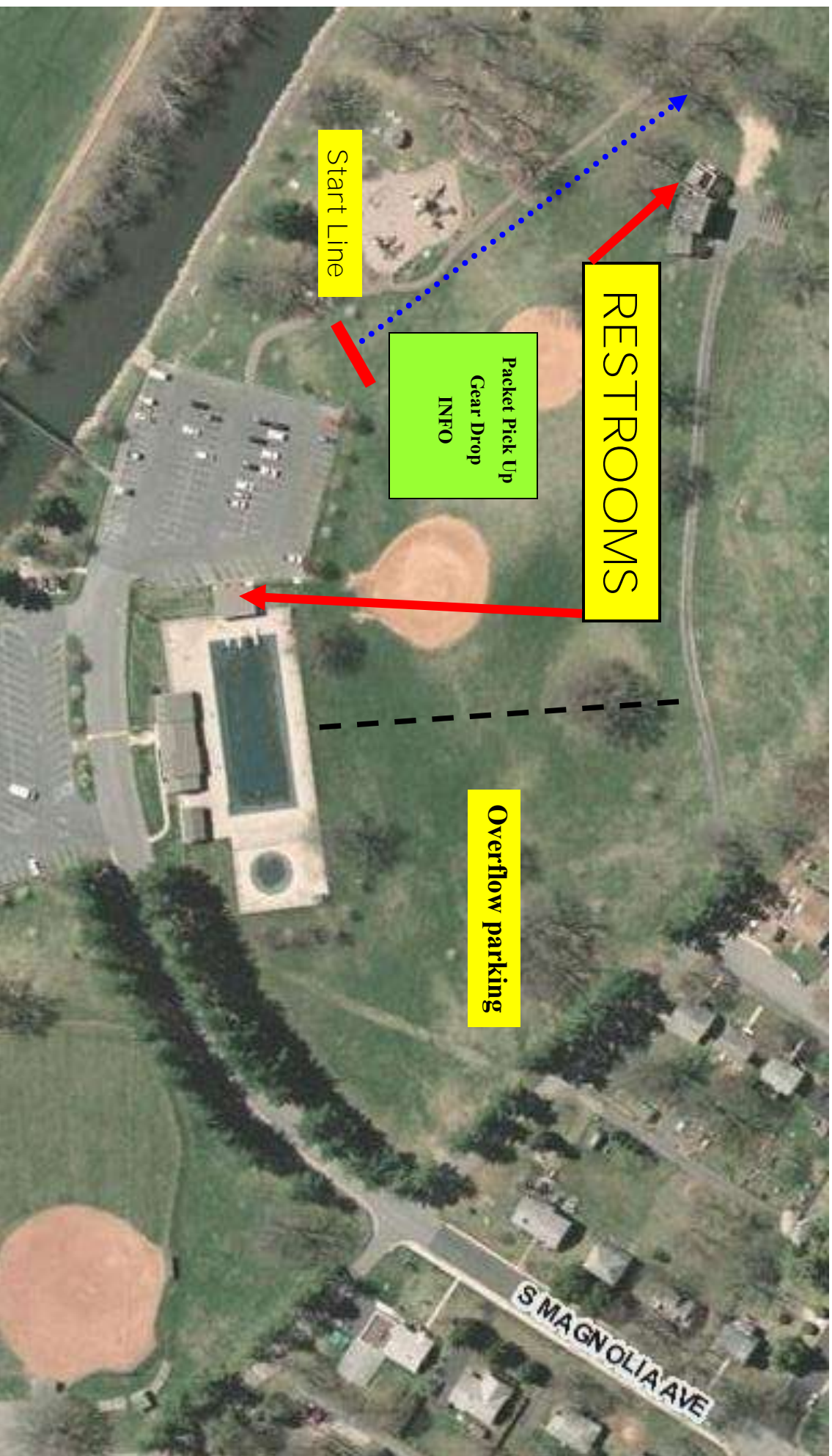
Tour De Valley Cycling: September 12

Fall Foliage 5K & 10K Races: October 10

For more information visit our website at:



**RIDGEVIEW PARK
START LINE MAP
7:00 AM GUN TIME**



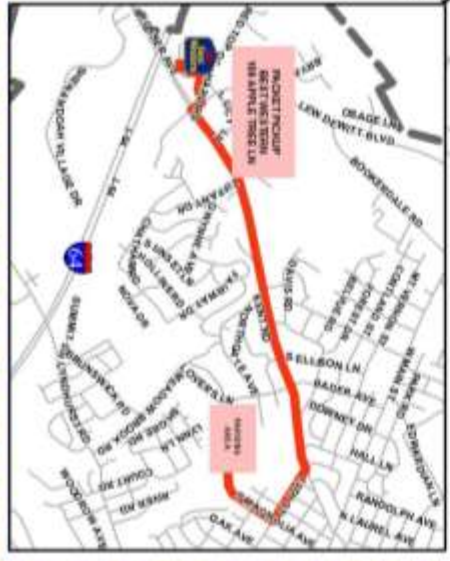
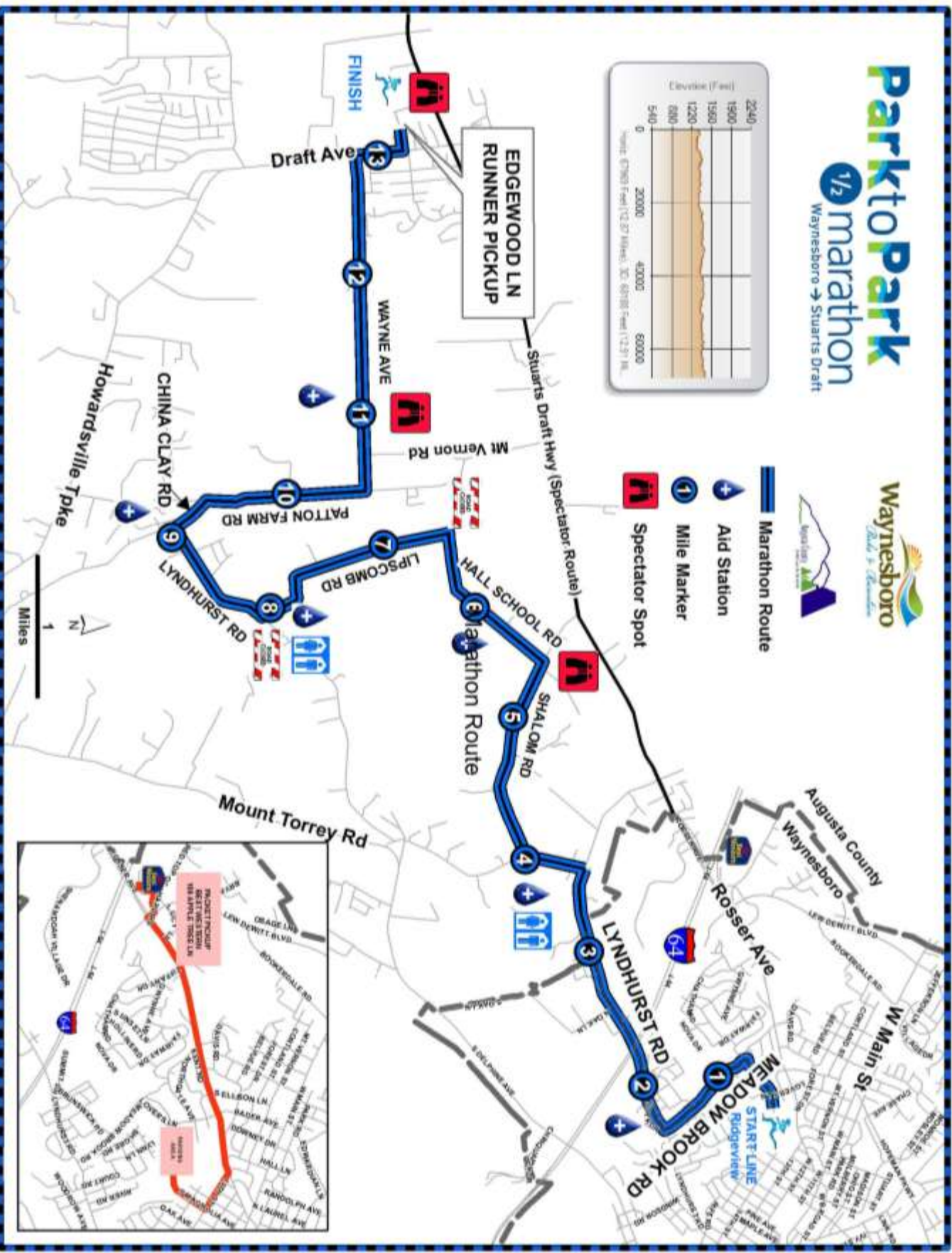
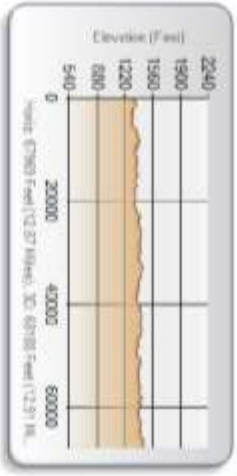
ParktoPark

1/2 marathon

Waynesboro → Stuarts Draft



- Marathon Route
- Aid Station
- Mile Marker
- Spectator Spot



Additional race day parking
is in the fields along Edge-
wood Lane and at the
Church

RESTROOMS

SHUTTLE BUSESSES

Along the Curve
Medals, Hats, Cool Towels,
Gatorade, EMS and Drop Bags

Water, Food & Sponsors

FINISH



Running For A Cause:

We are excited that the proceeds from this year's race will be donated to **Therapeutic Adventures, Inc.** based in Charlottesville, Virginia. *Therapeutic Adventures, Inc.* is a non-profit 501 (c) (3) charitable educational organization, committed to providing greater access to adaptive outdoor recreation (Adaptive Snow Sports, Adaptive Water Sports, and Adaptive Wilderness Adventures) -- their primary goal is to improve the quality of life of ALL persons by helping them achieve independence in the outdoor environments where adaptive adventure activities are offered and enjoyed. Program services include:



- *Freedom Outdoors – Adaptive Adventure Outfitters.* Provides assistive technology, adaptive outdoor equipment, safety products outdoor gear & specialty products to help individuals achieve greater functional independence in the outdoors.
- *Operation Freedom Outdoors* - is a service of THERAPEUTIC ADVENTURES, INC. committed to providing greater access to adaptive outdoor recreation for our disabled military heroes.

To learn more about some of the work they are doing in the Shenandoah Valley visit

<http://www.TAonline.org>



Founder Mark Andrews

Awards for Park to Park Half Marathon:

Overall Male: 1st Place: \$75 Visa Gift Card: **Dupont Community Credit Union**
\$25 Gift Certificate: Ragged Mountain Running Shop
1st place trophy

Overall Female: 1st Place: \$75 Visa Gift Card: **Dupont Community Credit Union**
\$25 Gift Certificate: Ragged Mountain Running Shop
1st place trophy

Masters (40+) Division:

Overall Male: 1st Place: \$75 Visa Gift Card: **Dupont Community Credit Union**
\$25 Gift Certificate: Ragged Mountain Running Shop
1st place trophy

Overall Female: 1st Place: \$75 Visa Gift Card: **Dupont Community Credit Union**
\$25 Gift Certificate: Ragged Mountain Running Shop
1st place trophy

Division Winners:

Male – 12-15, 16-19, 20-24, 25-29, 30-34, 35-39, 40-44, 45-49, 50-54,55-59, 60-64, 65 & over

Female – 12-15, 16-19, 20-24, 25-29, 30-34, 35-39, 40-44, 45-49, 50-54,55-59, 60-64, 65 & over

1st Place: \$20 Gift Certificate: **Dupont Community Credit Union**
1st place medal
2nd Place \$15 Gift Certificate: **Ragged Mountain Running Shop**
2nd place medal
3rd Place: 3rd place medal



A big THANK YOU to all of our sponsors & wonderful volunteers!!

Madison House, EMS from Waynesboro and Augusta County, Augusta County Sheriffs, Waynesboro Police, Waynesboro YMCA, Blue Ridge Church of Christ, Shenandoah Pentecostal Church, Boy Scout Troop, Stuarts Draft and Fort Defiance Key Clubs, Parkway Wesleyan Church and Anytime Fitness.



Waynesboro Inn & Suites
Conference Center

PLUS



Panera
BREAD®



The Power of Physical Therapy™



AREA WIDE PROTECTIVE
BLUE RIDGE
outdoors
MAGAZINE

